

Frequency of Use
Perception of Risk
Parent Disapproval
Friends Disapproval
Age of First Use
Availability
Where
When

2010-11 Long Beach Schools

Long Beach, MS

Created by Pride Surveys

February 15, 2011

Outline

- 1 Frequency of Use
 - Annual Use
 - 30-Day Use
- 2 Perception of Risk
- 3 Parent Disapproval
- 4 Friends Disapproval
- 5 Age of First Use
- 6 Availability
- 7 Where
- 8 When

Frequency of Use
Perception of Risk
Parent Disapproval
Friends Disapproval
Age of First Use
Availability
Where
When

Annual Use
30-Day Use

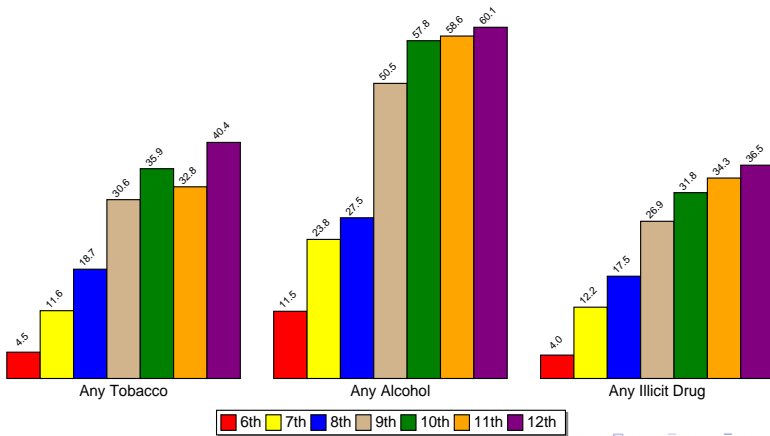
Outline

- 1 **Frequency of Use**
 - Annual Use
 - 30-Day Use
- 2 Perception of Risk
- 3 Parent Disapproval
- 4 Friends Disapproval
- 5 Age of First Use
- 6 Availability
- 7 Where
- 8 When

Frequency of Use
 Perception of Risk
 Parent Disapproval
 Friends Disapproval
 Age of First Use
 Availability
 Where
 When

Annual Use
 30-Day Use

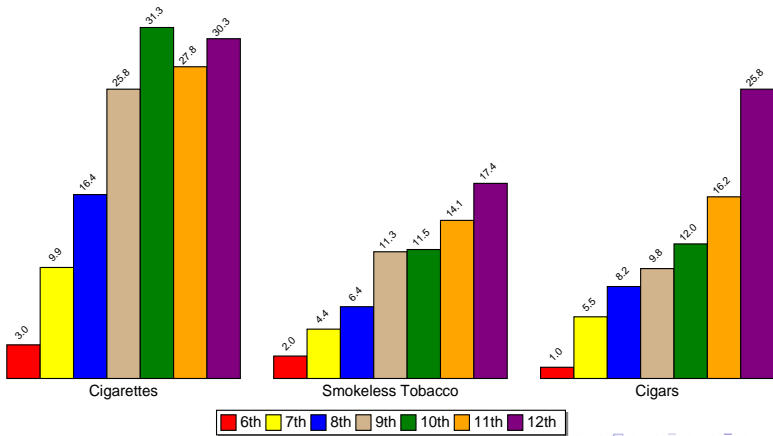
Annual Use of Any Tobacco, Any Alcohol and Any Illicit Drug



Frequency of Use
 Perception of Risk
 Parent Disapproval
 Friends Disapproval
 Age of First Use
 Availability
 Where
 When

Annual Use
 30-Day Use

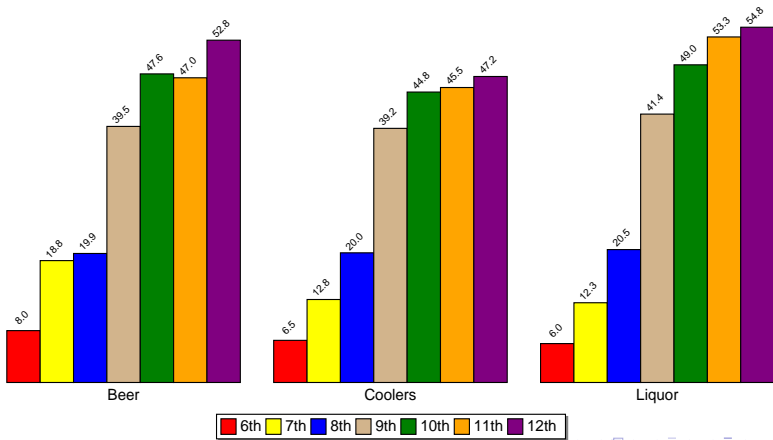
Annual Use of Cigarettes, Smokeless Tobacco and Cigars



Frequency of Use
 Perception of Risk
 Parent Disapproval
 Friends Disapproval
 Age of First Use
 Availability
 Where
 When

Annual Use
 30-Day Use

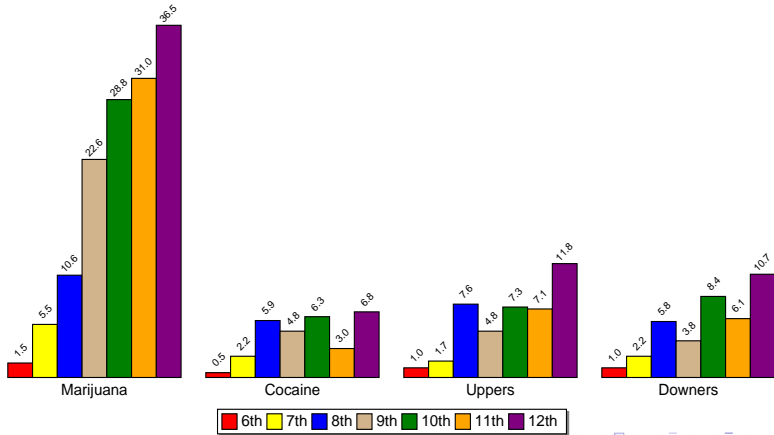
Annual Use of Beer, Coolers and Liquor



Frequency of Use
 Perception of Risk
 Parent Disapproval
 Friends Disapproval
 Age of First Use
 Availability
 Where
 When

Annual Use
 30-Day Use

Annual Use of Marijuana, Cocaine, Uppers and Downers

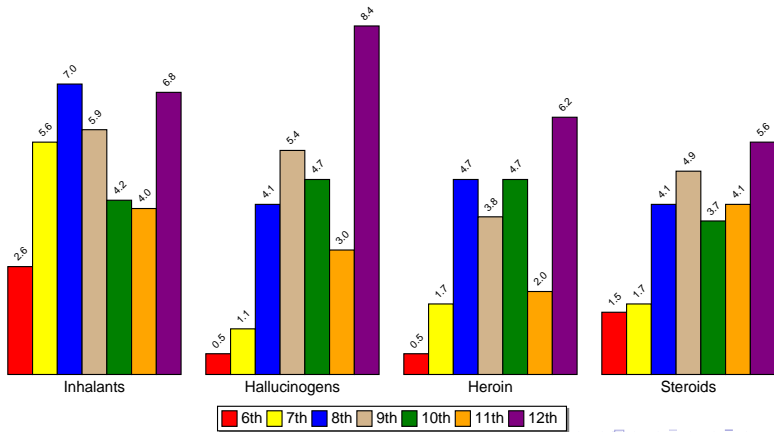


Source: Pride Surveys

Frequency of Use
 Perception of Risk
 Parent Disapproval
 Friends Disapproval
 Age of First Use
 Availability
 Where
 When

Annual Use
 30-Day Use

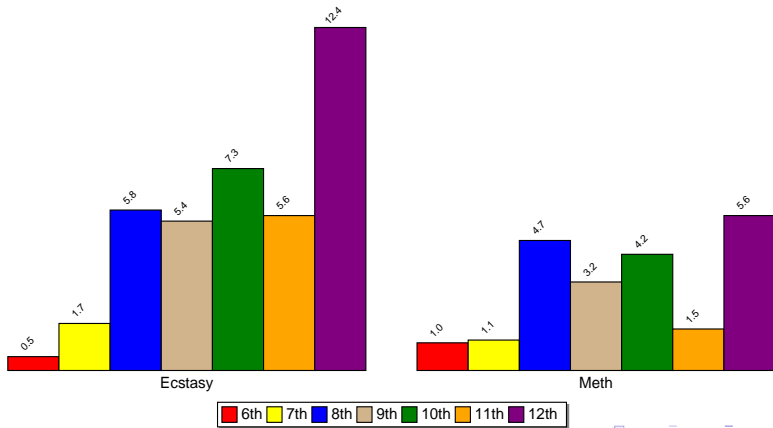
Annual Use of Inhalants, Hallucinogens, Heroin and Steroids



Frequency of Use
Perception of Risk
Parent Disapproval
Friends Disapproval
Age of First Use
Availability
Where
When

Annual Use
30-Day Use

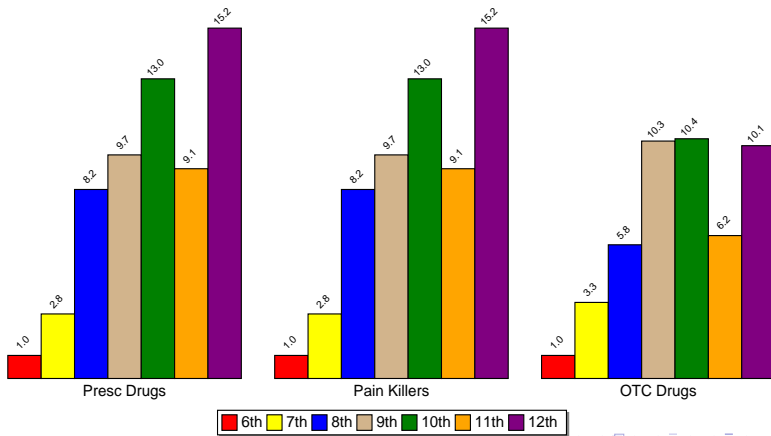
Annual Use of Ecstasy and Meth



Frequency of Use
 Perception of Risk
 Parent Disapproval
 Friends Disapproval
 Age of First Use
 Availability
 Where
 When

Annual Use
 30-Day Use

Annual Use of Prescription Drugs, Pain Killers and Over-The-Counter Drugs



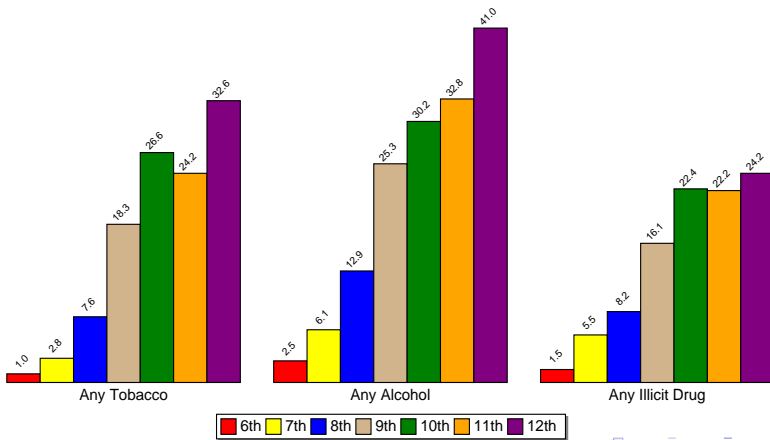
Outline

- 1 Frequency of Use
 - Annual Use
 - 30-Day Use
- 2 Perception of Risk
- 3 Parent Disapproval
- 4 Friends Disapproval
- 5 Age of First Use
- 6 Availability
- 7 Where
- 8 When

Frequency of Use
 Perception of Risk
 Parent Disapproval
 Friends Disapproval
 Age of First Use
 Availability
 Where
 When

Annual Use
 30-Day Use

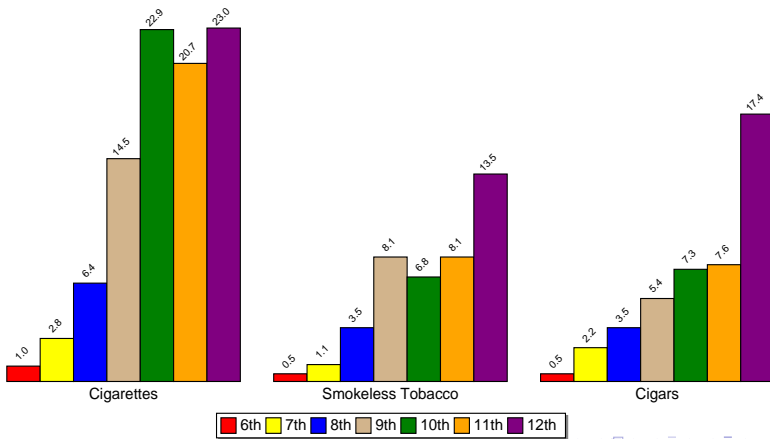
30-Day Use of Any Tobacco, Any Alcohol and Any Illicit Drug



Frequency of Use
 Perception of Risk
 Parent Disapproval
 Friends Disapproval
 Age of First Use
 Availability
 Where
 When

Annual Use
 30-Day Use

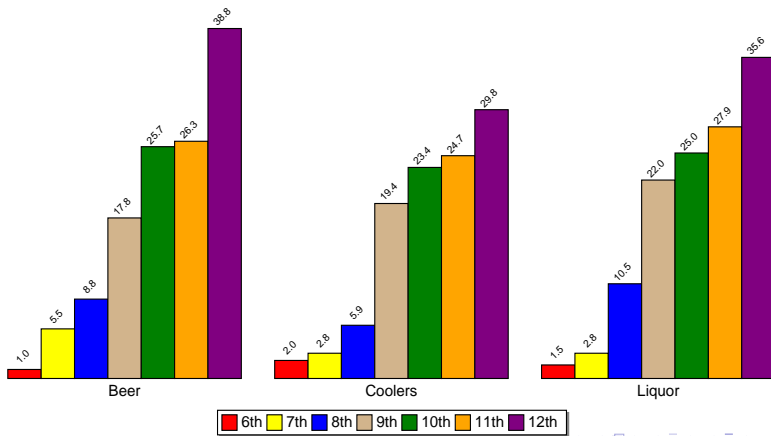
30-Day Use of Cigarettes, Smokeless Tobacco and Cigars



Frequency of Use
 Perception of Risk
 Parent Disapproval
 Friends Disapproval
 Age of First Use
 Availability
 Where
 When

Annual Use
 30-Day Use

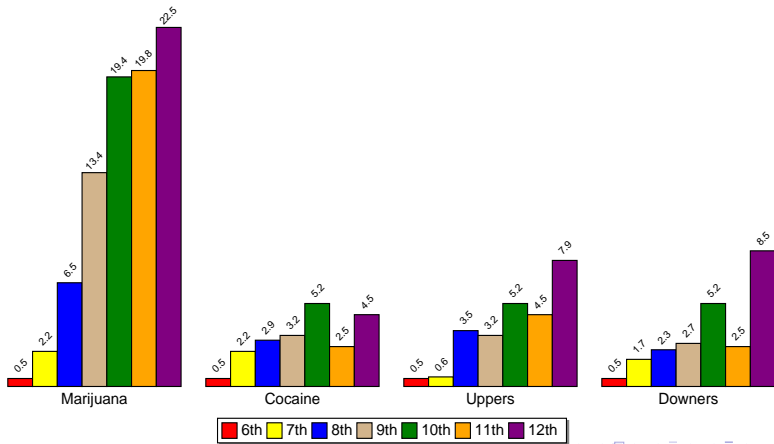
30-Day Use of Beer, Coolers and Liquor



Frequency of Use
 Perception of Risk
 Parent Disapproval
 Friends Disapproval
 Age of First Use
 Availability
 Where
 When

Annual Use
 30-Day Use

30-Day Use of Marijuana, Cocaine, Uppers and Downers

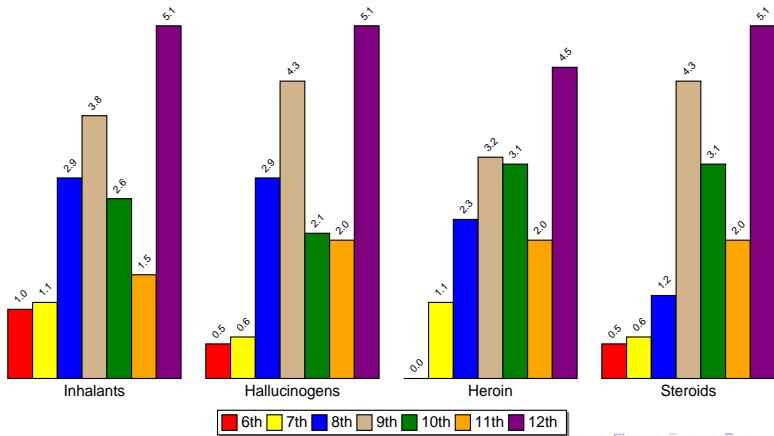


Source: Pride Surveys

Frequency of Use
 Perception of Risk
 Parent Disapproval
 Friends Disapproval
 Age of First Use
 Availability
 Where
 When

Annual Use
 30-Day Use

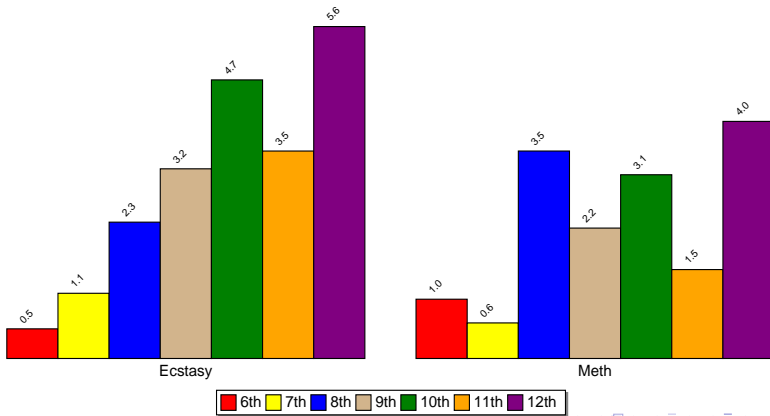
30-Day Use of Inhalants, Hallucinogens, Heroin and Steroids



Frequency of Use
Perception of Risk
Parent Disapproval
Friends Disapproval
Age of First Use
Availability
Where
When

Annual Use
30-Day Use

30-Day Use of Ecstasy and Meth

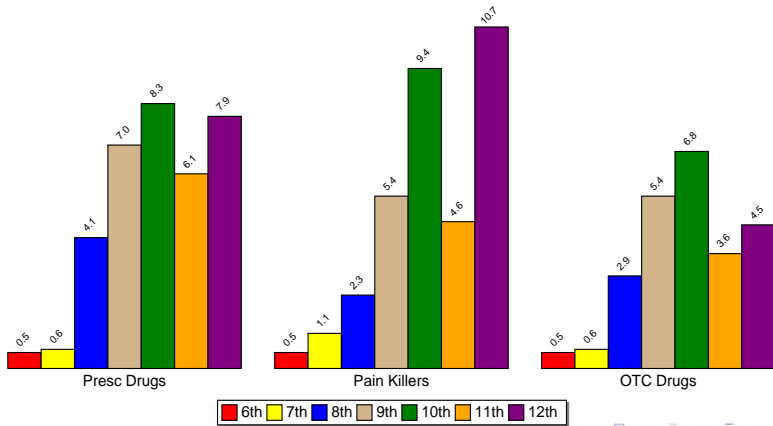


Source: Pride Surveys

Frequency of Use
 Perception of Risk
 Parent Disapproval
 Friends Disapproval
 Age of First Use
 Availability
 Where
 When

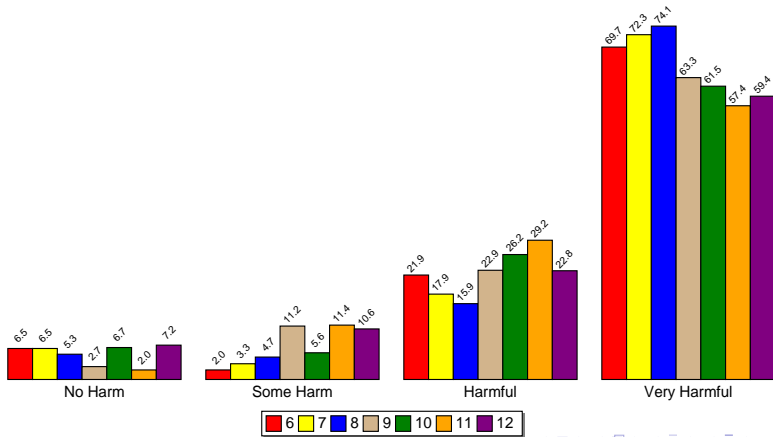
Annual Use
 30-Day Use

30-Day Use of Prescription Drugs, Pain Killers and Over-The-Counter Drugs



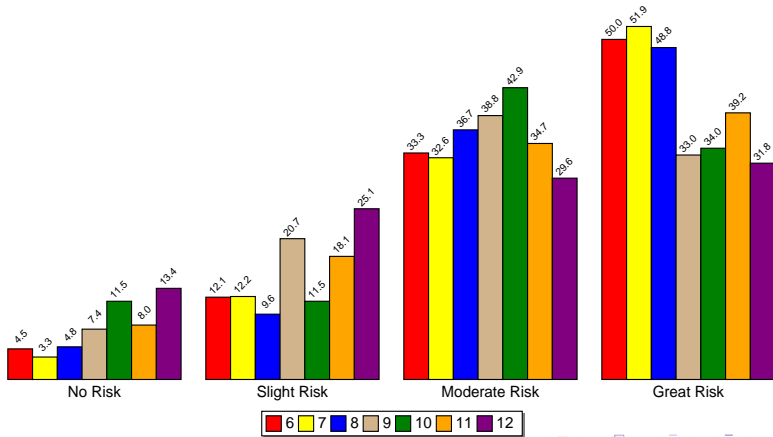
Frequency of Use
 Perception of Risk
 Parent Disapproval
 Friends Disapproval
 Age of First Use
 Availability
 Where
 When

Perception of Risk -- Any Tobacco



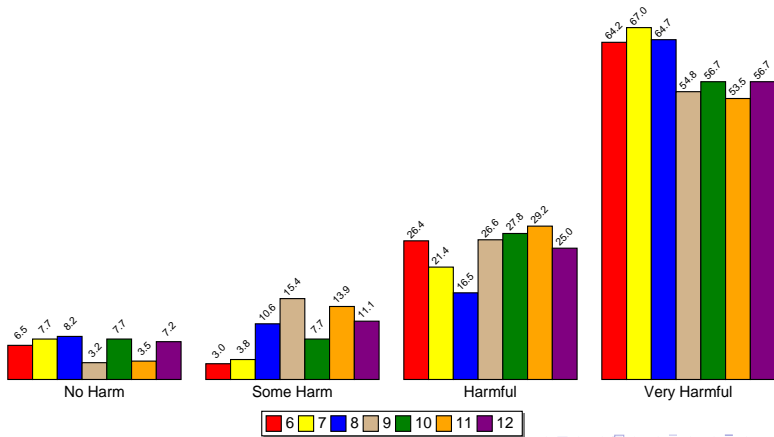
Frequency of Use
 Perception of Risk
 Parent Disapproval
 Friends Disapproval
 Age of First Use
 Availability
 Where
 When

Perception of Risk -- Regular Alcohol Use



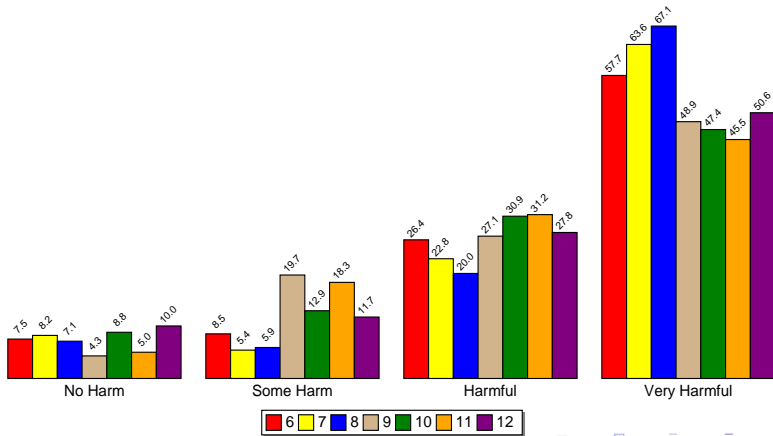
Frequency of Use
 Perception of Risk
 Parent Disapproval
 Friends Disapproval
 Age of First Use
 Availability
 Where
 When

Perception of Risk -- Cigarettes

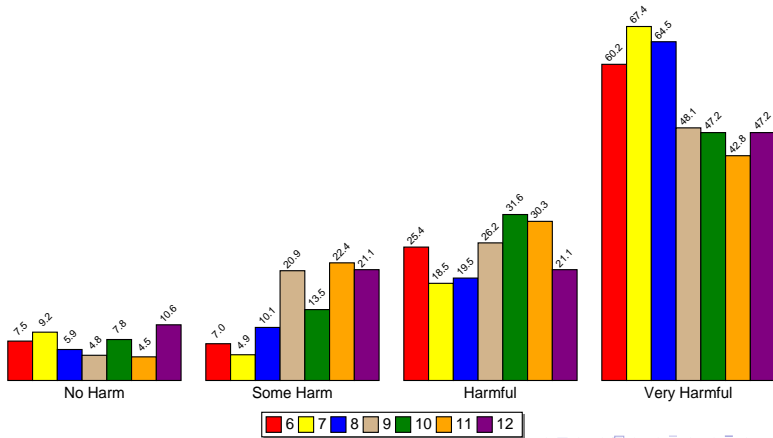


Frequency of Use
Perception of Risk
Parent Disapproval
Friends Disapproval
Age of First Use
Availability
Where
When

Perception of Risk -- Smokeless Tobacco

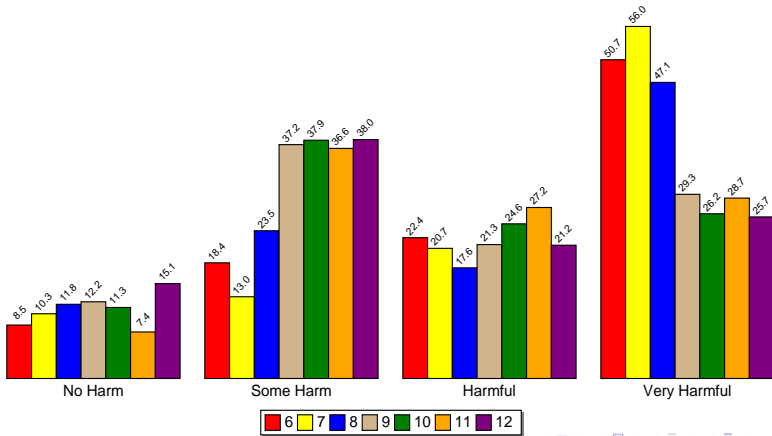


Perception of Risk -- Cigars



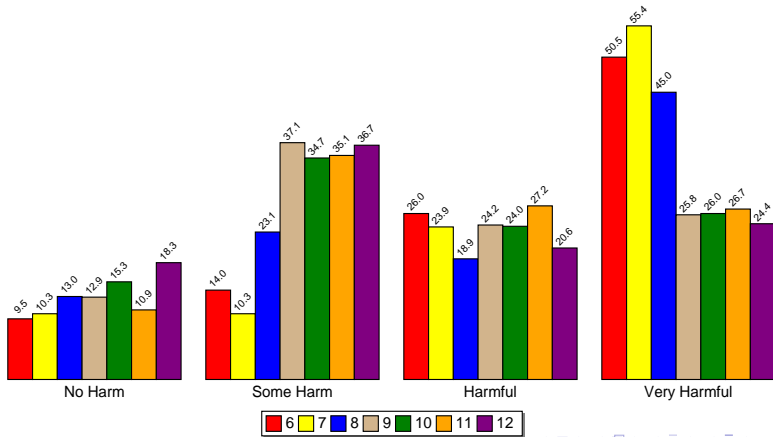
Frequency of Use
 Perception of Risk
 Parent Disapproval
 Friends Disapproval
 Age of First Use
 Availability
 Where
 When

Perception of Risk -- Beer



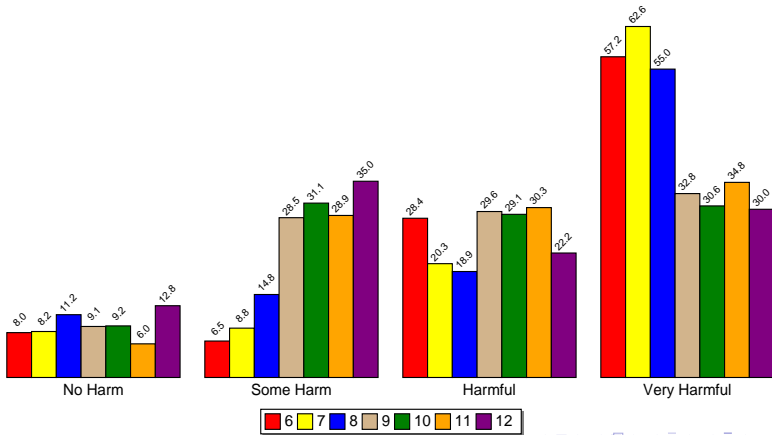
Frequency of Use
 Perception of Risk
 Parent Disapproval
 Friends Disapproval
 Age of First Use
 Availability
 Where
 When

Perception of Risk -- Coolers, Breezers, etc.



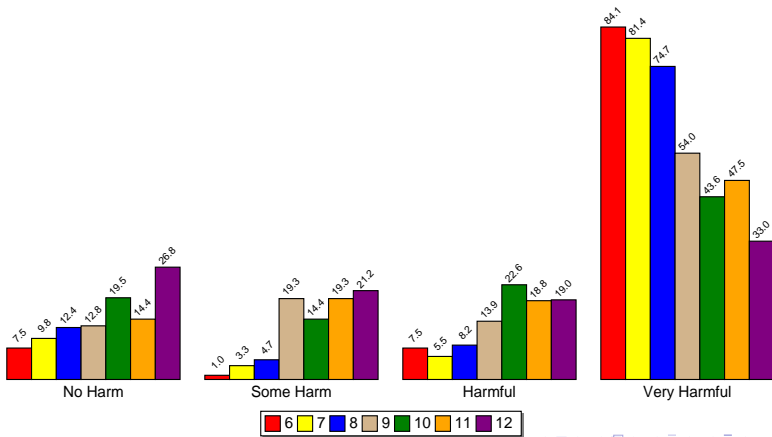
Frequency of Use
 Perception of Risk
 Parent Disapproval
 Friends Disapproval
 Age of First Use
 Availability
 Where
 When

Perception of Risk -- Liquor



Frequency of Use
 Perception of Risk
 Parent Disapproval
 Friends Disapproval
 Age of First Use
 Availability
 Where
 When

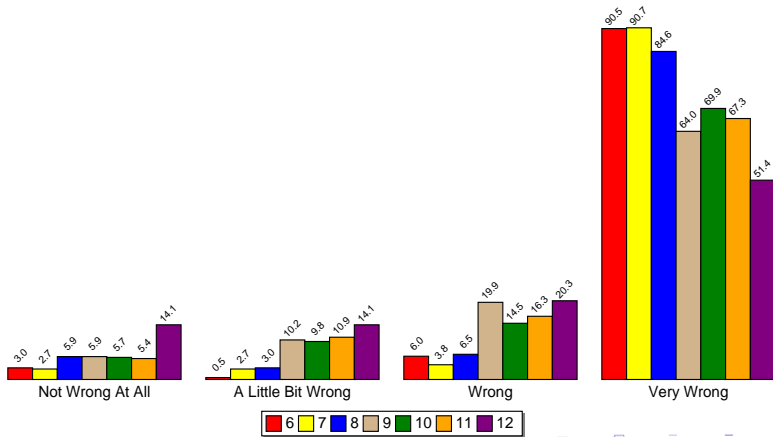
Perception of Risk -- Marijuana



Source: Pride Surveys

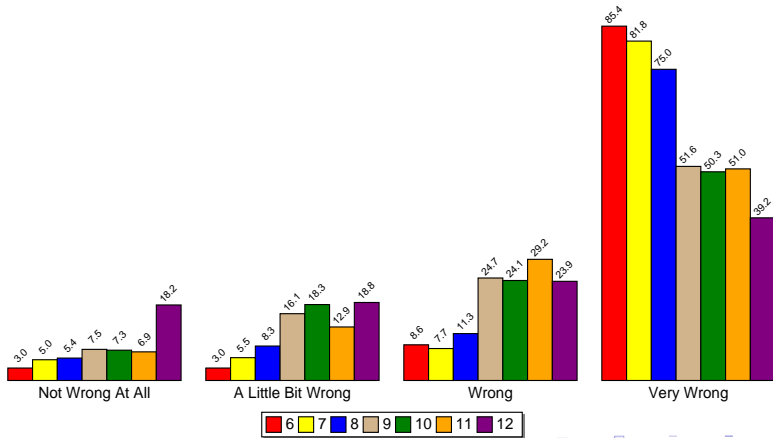
Frequency of Use
 Perception of Risk
Parent Disapproval
 Friends Disapproval
 Age of First Use
 Availability
 Where
 When

Perception of Parental Disapproval -- Use Tobacco

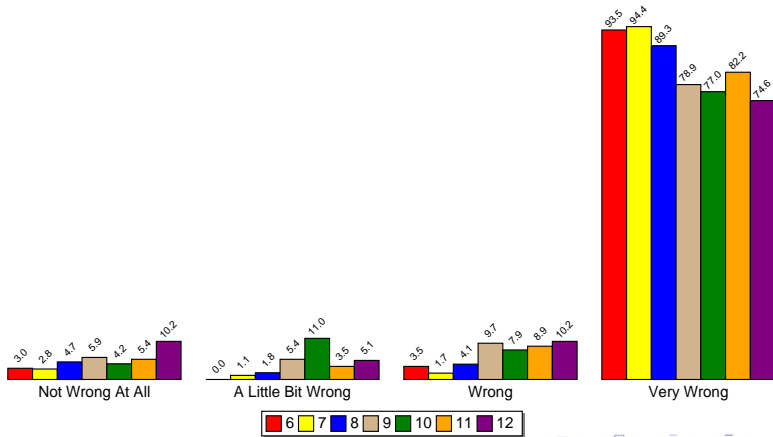


Frequency of Use
 Perception of Risk
Parent Disapproval
 Friends Disapproval
 Age of First Use
 Availability
 Where
 When

Perception of Parental Disapproval -- Use Alcohol

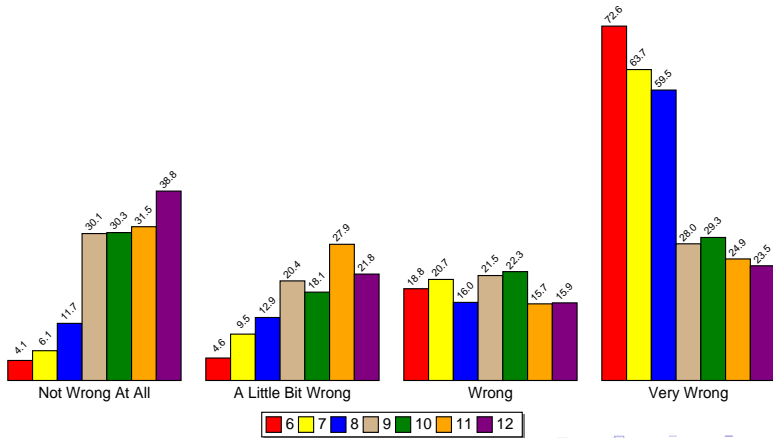


Perception of Parental Disapproval -- Use Marijuana

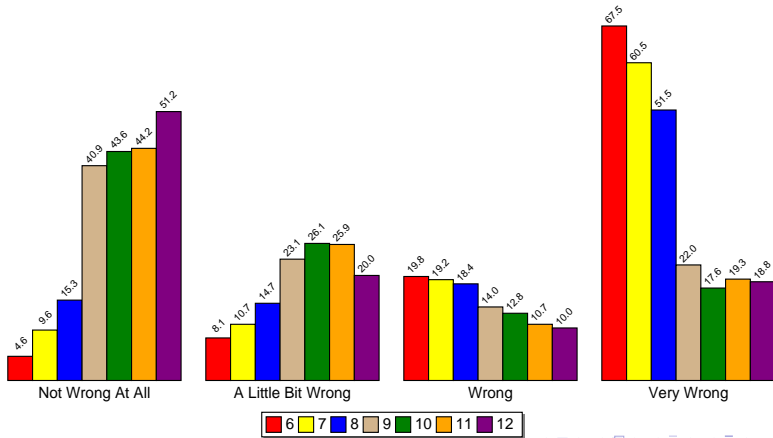


Frequency of Use
 Perception of Risk
 Parent Disapproval
Friends Disapproval
 Age of First Use
 Availability
 Where
 When

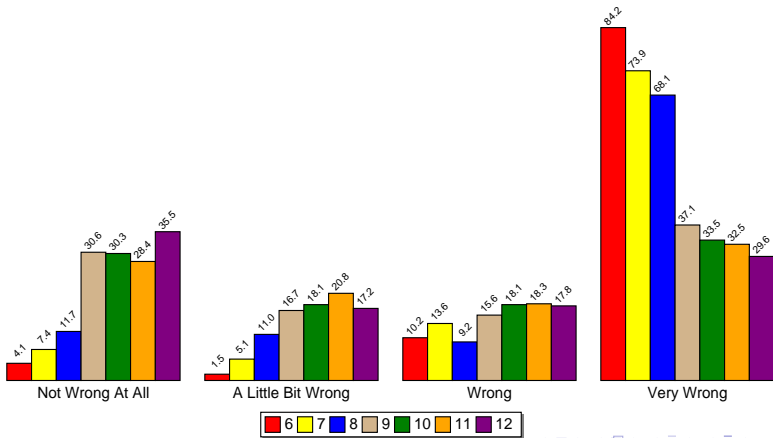
Perception of Friends' Disapproval -- Use Tobacco



Perception of Friends' Disapproval -- Use Alcohol

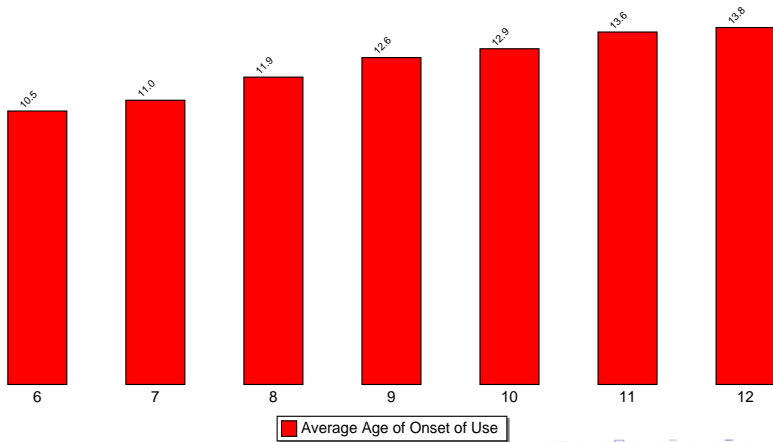


Perception of Friends' Disapproval -- Use Marijuana



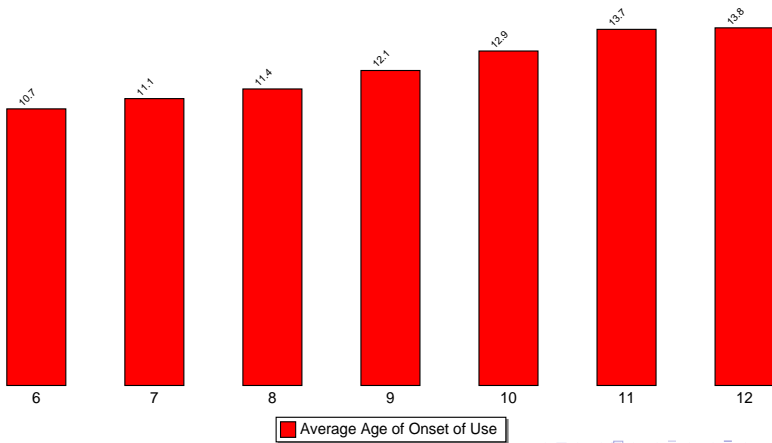
Frequency of Use
Perception of Risk
Parent Disapproval
Friends Disapproval
Age of First Use
Availability
Where
When

Average Age of Onset of Use of Any Tobacco



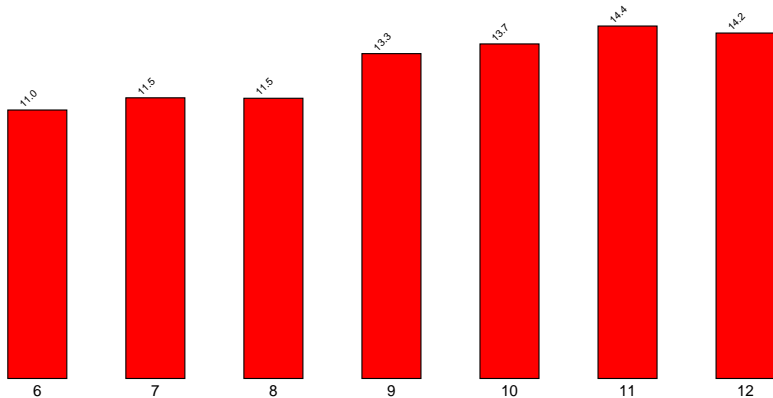
Frequency of Use
Perception of Risk
Parent Disapproval
Friends Disapproval
Age of First Use
Availability
Where
When

Average Age of Onset of Use of Any Alcohol



Frequency of Use
Perception of Risk
Parent Disapproval
Friends Disapproval
Age of First Use
Availability
Where
When

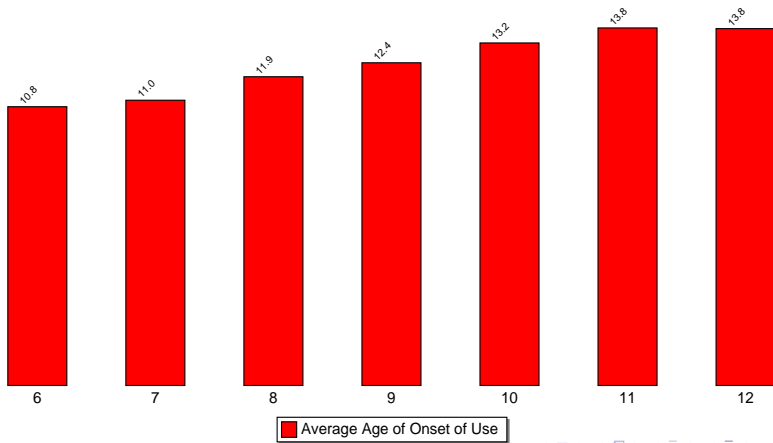
Average Age of Onset of Use of Any Illicit Drug



Average Age of Onset of Use

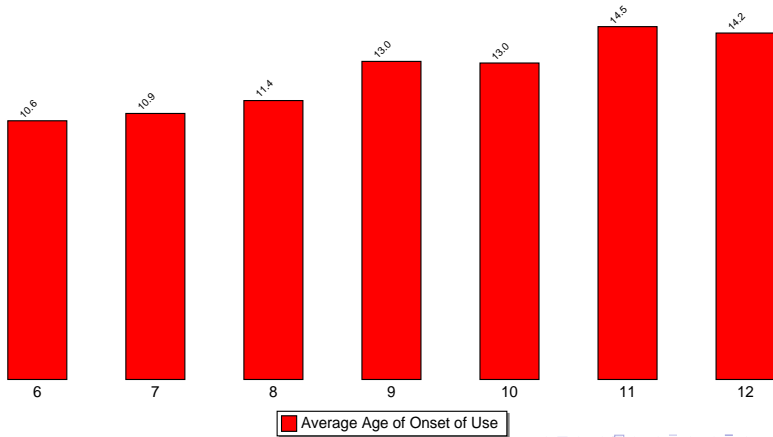
Frequency of Use
Perception of Risk
Parent Disapproval
Friends Disapproval
Age of First Use
Availability
Where
When

Average Age of Onset of Use of Cigarettes



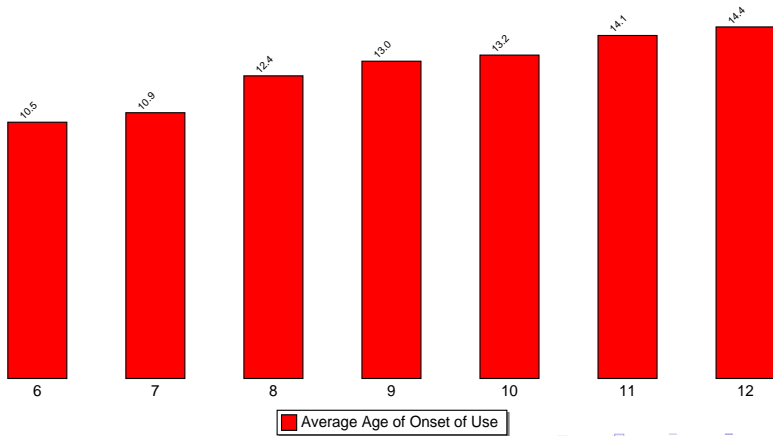
Frequency of Use
Perception of Risk
Parent Disapproval
Friends Disapproval
Age of First Use
Availability
Where
When

Average Age of Onset of Use of Smokeless Tobacco



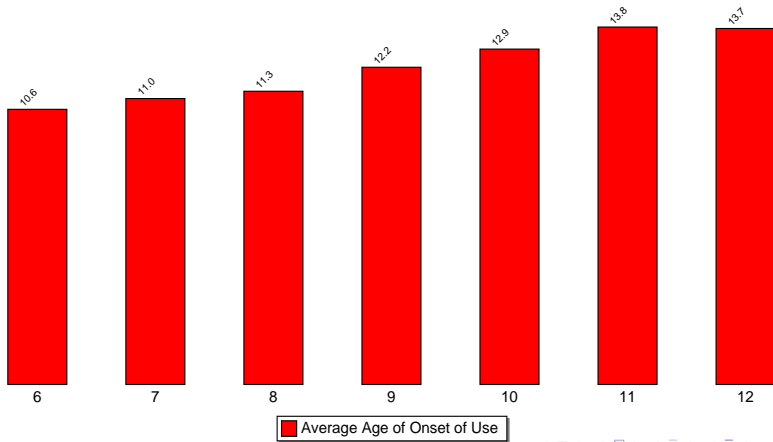
Frequency of Use
Perception of Risk
Parent Disapproval
Friends Disapproval
Age of First Use
Availability
Where
When

Average Age of Onset of Use of Cigars



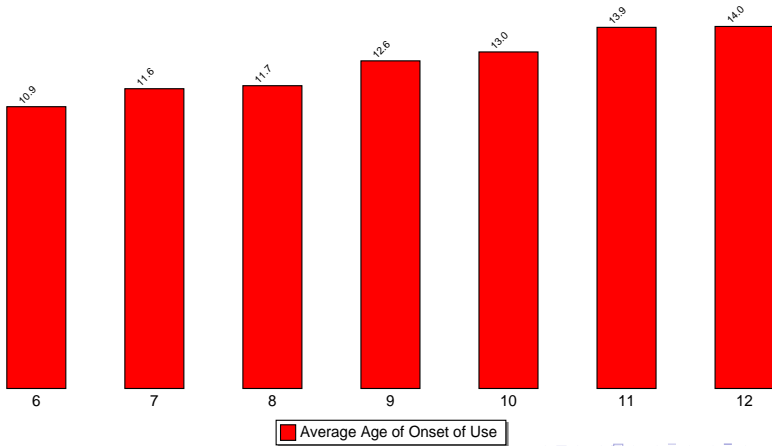
Frequency of Use
Perception of Risk
Parent Disapproval
Friends Disapproval
Age of First Use
Availability
Where
When

Average Age of Onset of Use of Beer



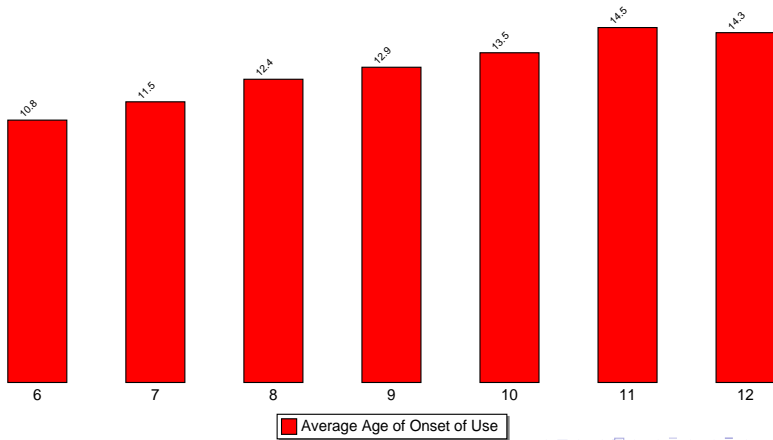
Frequency of Use
Perception of Risk
Parent Disapproval
Friends Disapproval
Age of First Use
Availability
Where
When

Average Age of Onset of Use of Coolers, Breezers, etc.



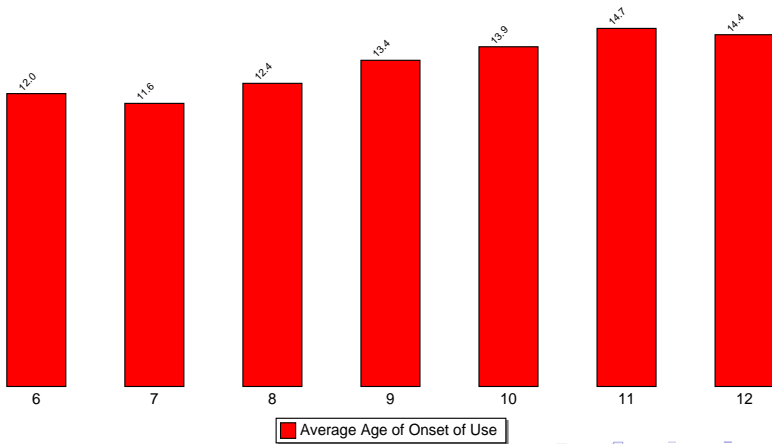
Frequency of Use
Perception of Risk
Parent Disapproval
Friends Disapproval
Age of First Use
Availability
Where
When

Average Age of Onset of Use of Liquor



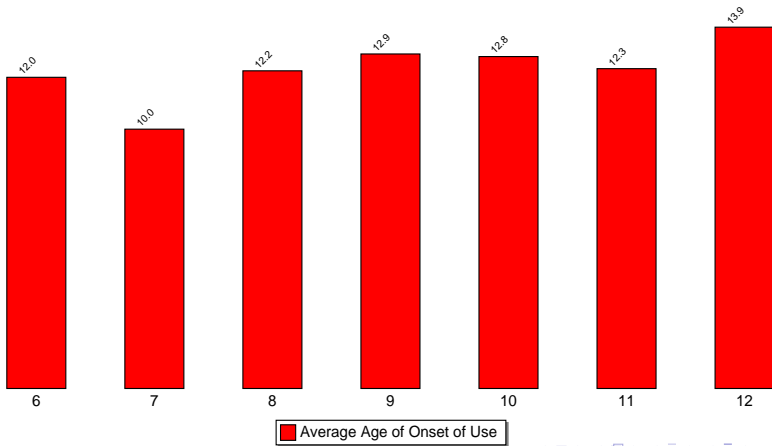
Frequency of Use
Perception of Risk
Parent Disapproval
Friends Disapproval
Age of First Use
Availability
Where
When

Average Age of Onset of Use of Marijuana



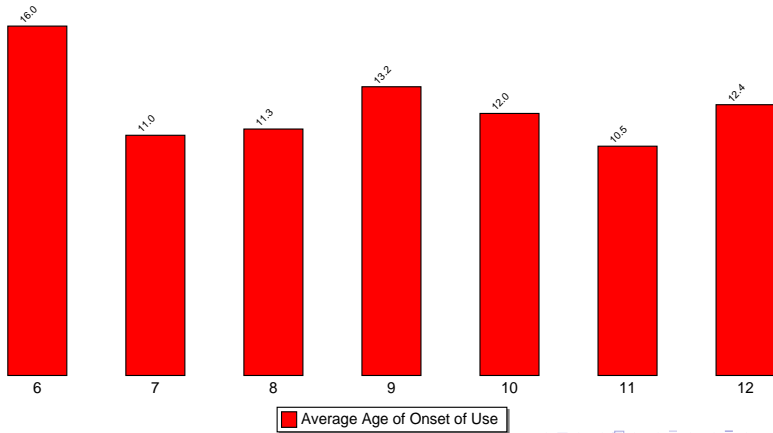
Frequency of Use
Perception of Risk
Parent Disapproval
Friends Disapproval
Age of First Use
Availability
Where
When

Average Age of Onset of Use of Cocaine



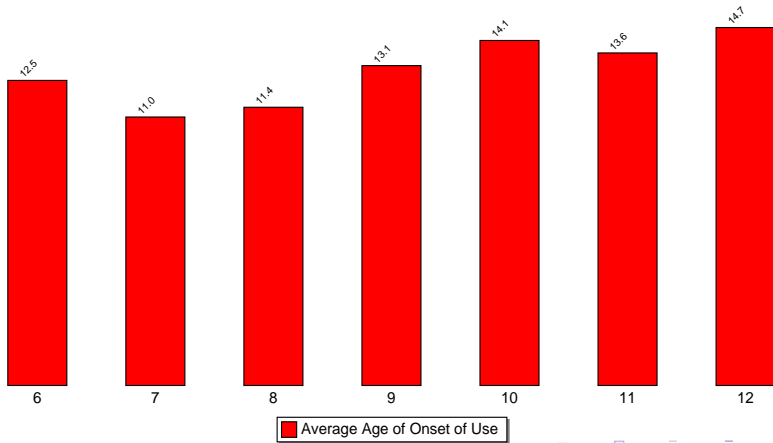
Frequency of Use
Perception of Risk
Parent Disapproval
Friends Disapproval
Age of First Use
Availability
Where
When

Average Age of Onset of Use of Meth



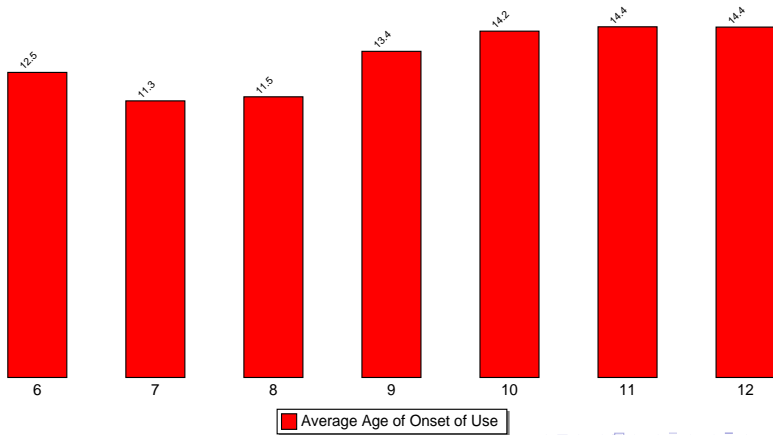
Frequency of Use
Perception of Risk
Parent Disapproval
Friends Disapproval
Age of First Use
Availability
Where
When

Average Age of Onset of Use of Prescription Drugs



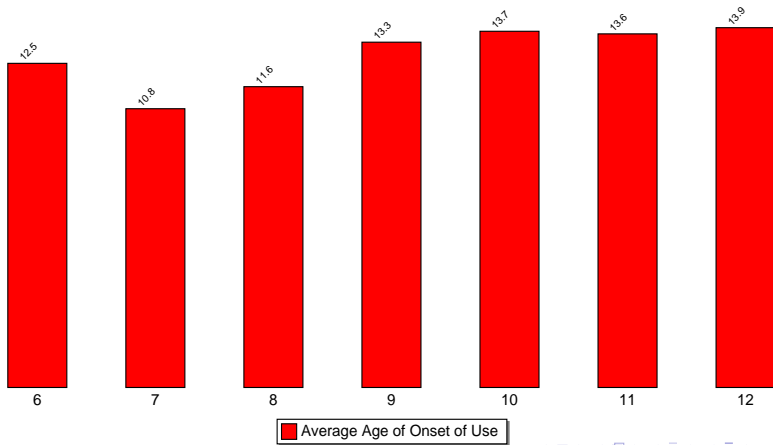
Frequency of Use
Perception of Risk
Parent Disapproval
Friends Disapproval
Age of First Use
Availability
Where
When

Average Age of Onset of Use of Pain Killers

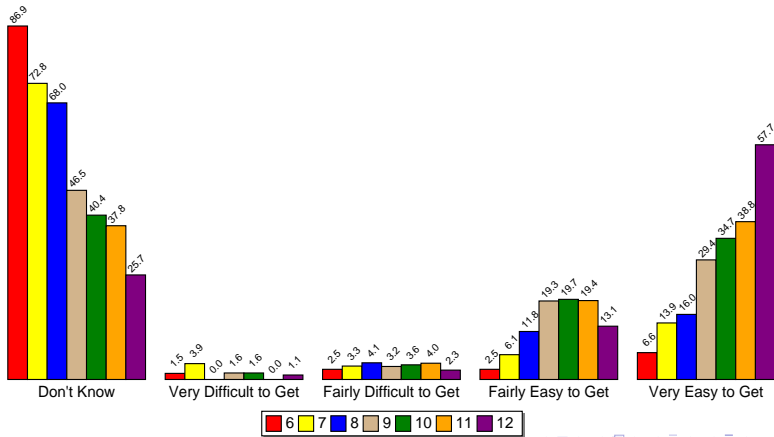


Frequency of Use
Perception of Risk
Parent Disapproval
Friends Disapproval
Age of First Use
Availability
Where
When

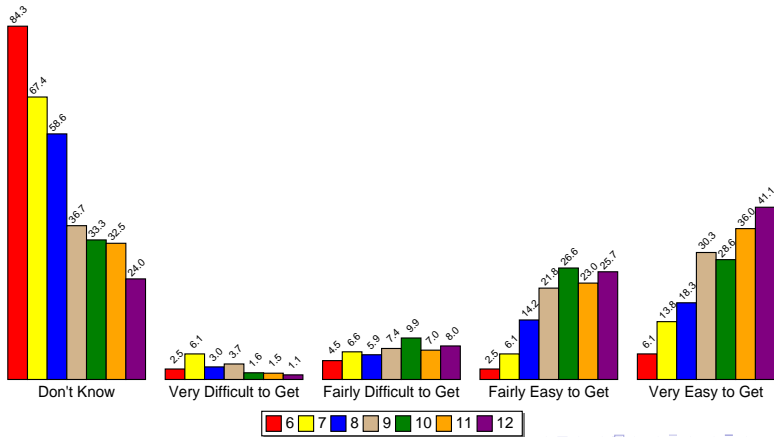
Average Age of Onset of Use of Over-the-Counter Drugs



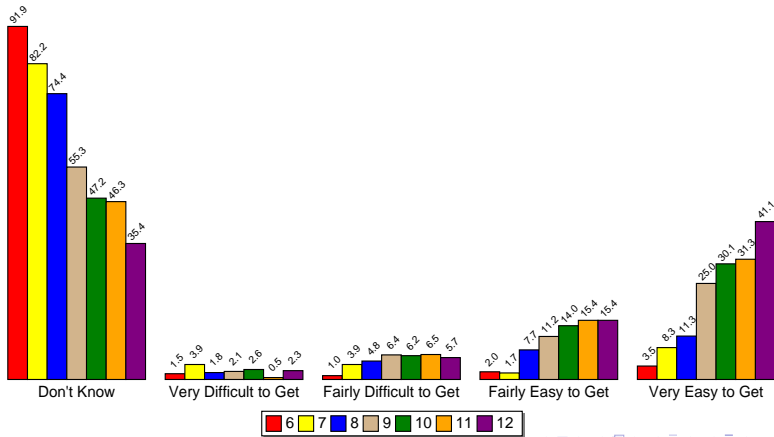
Availability -- Any Tobacco



Availability -- Any Alcohol

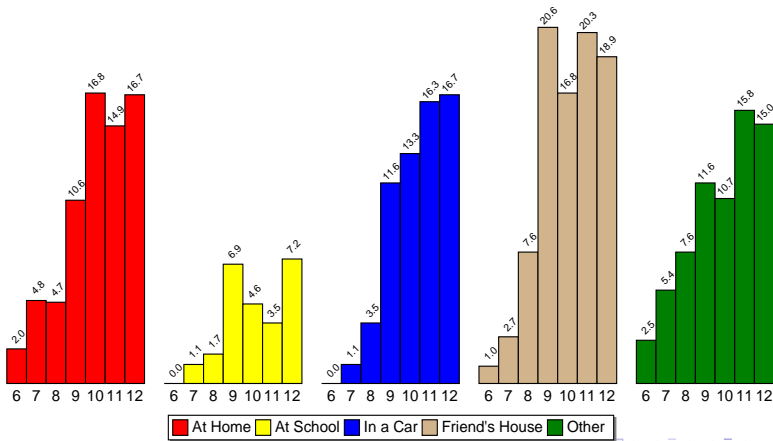


Availability -- Marijuana



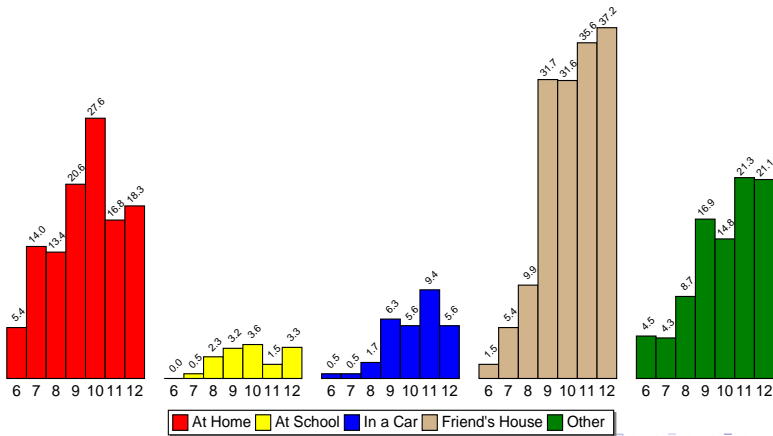
Frequency of Use
 Perception of Risk
 Parent Disapproval
 Friends Disapproval
 Age of First Use
 Availability
Where
 When

Where Do You Use Any Tobacco



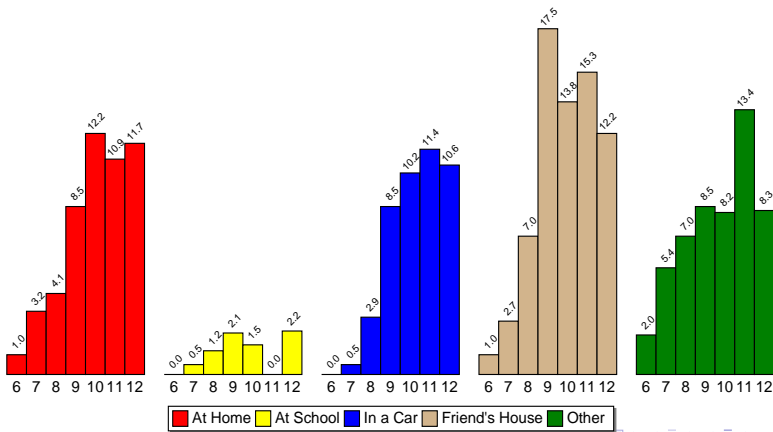
Frequency of Use
 Perception of Risk
 Parent Disapproval
 Friends Disapproval
 Age of First Use
 Availability
Where
 When

Where Do You Use Any Alcohol



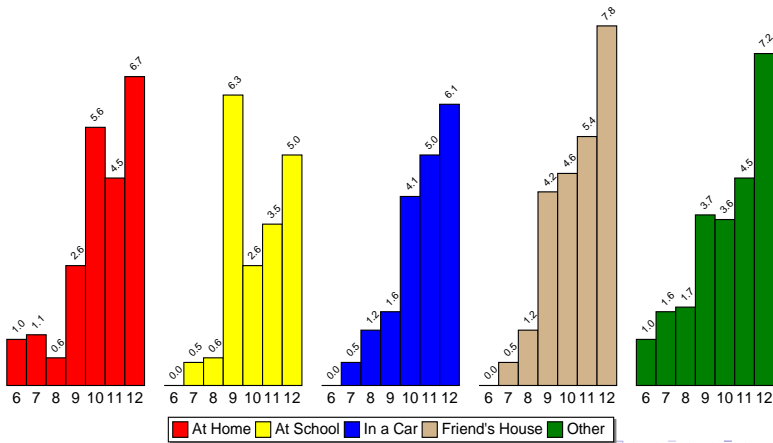
Frequency of Use
 Perception of Risk
 Parent Disapproval
 Friends Disapproval
 Age of First Use
 Availability
Where
 When

Where Do You Use Cigarettes



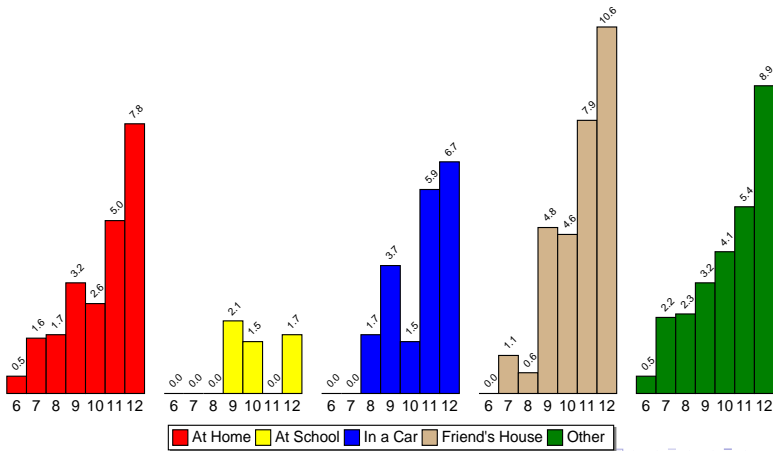
Frequency of Use
 Perception of Risk
 Parent Disapproval
 Friends Disapproval
 Age of First Use
 Availability
Where
 When

Where Do You Use Smokeless Tobacco



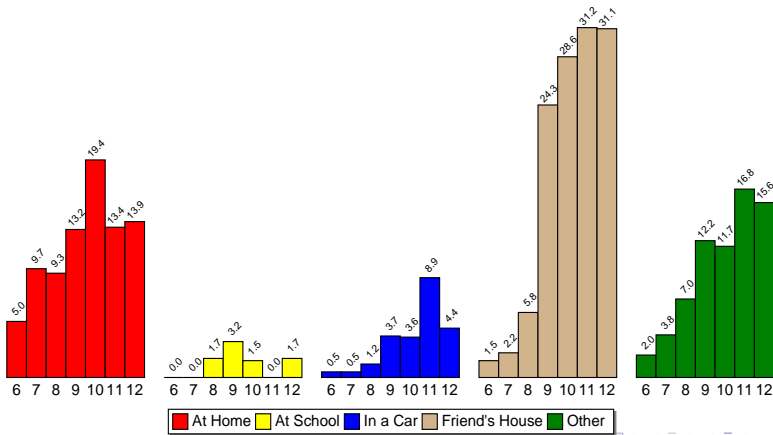
Frequency of Use
 Perception of Risk
 Parent Disapproval
 Friends Disapproval
 Age of First Use
 Availability
Where
 When

Where Do You Use Cigars



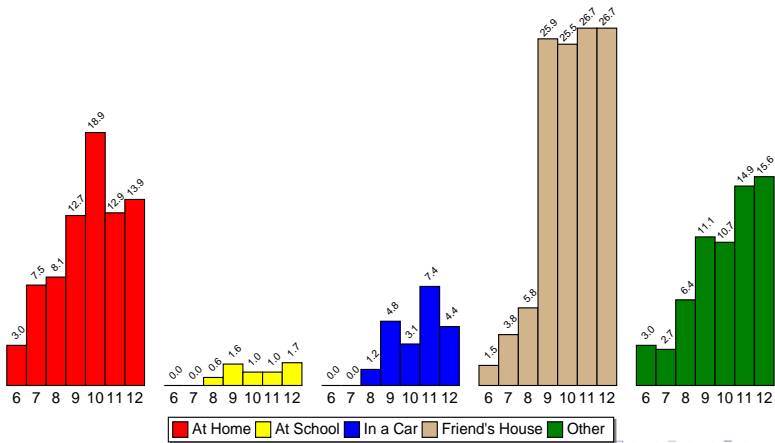
Frequency of Use
 Perception of Risk
 Parent Disapproval
 Friends Disapproval
 Age of First Use
 Availability
Where
 When

Where Do You Use Beer



Frequency of Use
 Perception of Risk
 Parent Disapproval
 Friends Disapproval
 Age of First Use
 Availability
Where
 When

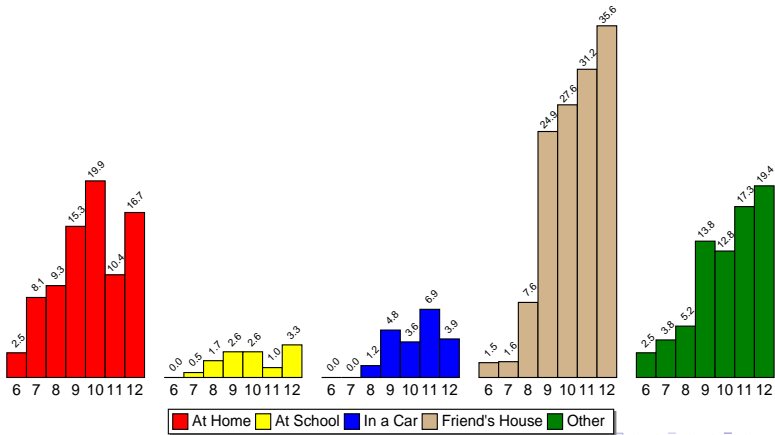
Where Do You Use Coolers, Breezers, etc.



Source: Pride Surveys

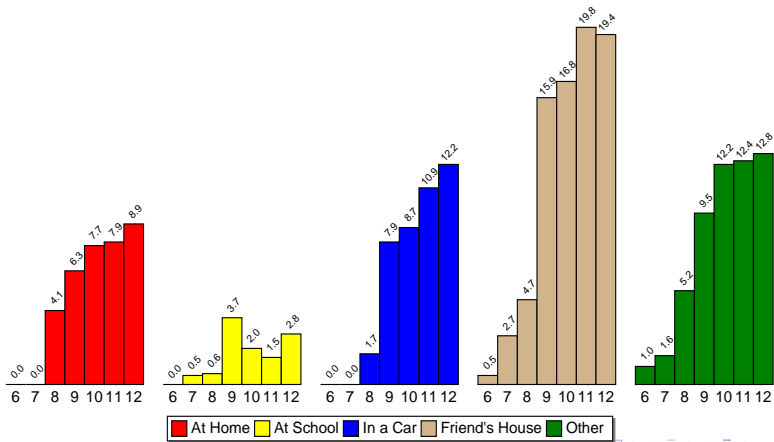
Frequency of Use
 Perception of Risk
 Parent Disapproval
 Friends Disapproval
 Age of First Use
 Availability
Where
 When

Where Do You Use Liquor



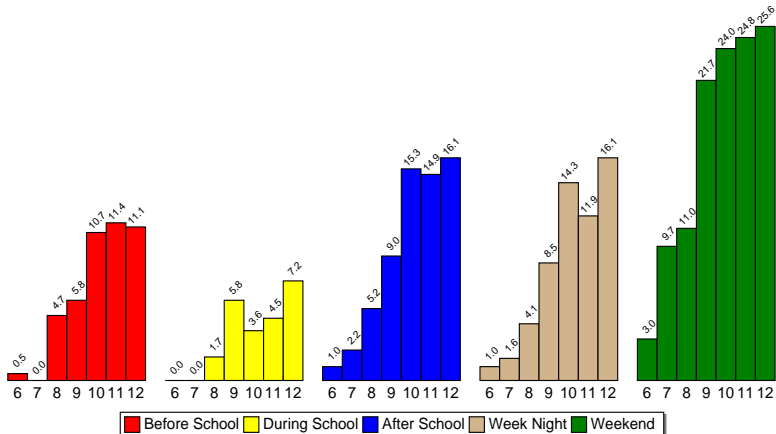
Frequency of Use
 Perception of Risk
 Parent Disapproval
 Friends Disapproval
 Age of First Use
 Availability
Where
 When

Where Do You Use Marijuana



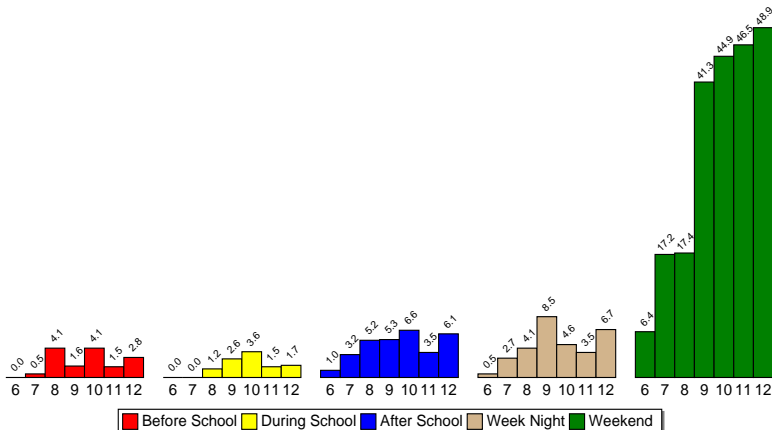
Frequency of Use
 Perception of Risk
 Parent Disapproval
 Friends Disapproval
 Age of First Use
 Availability
 Where
 When

When Do You Use Any Tobacco



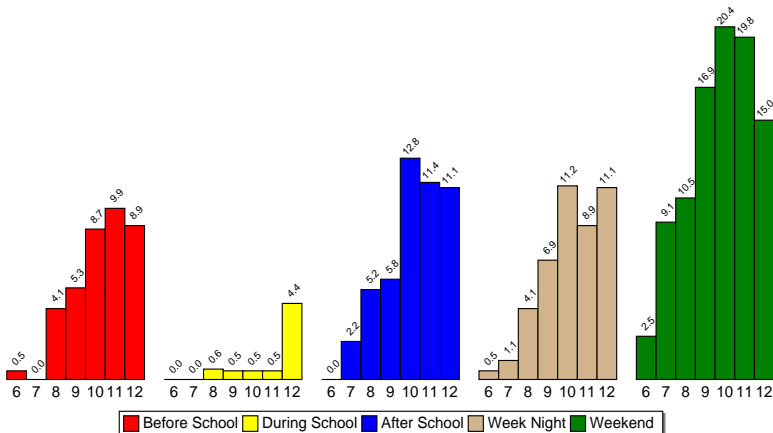
Frequency of Use
 Perception of Risk
 Parent Disapproval
 Friends Disapproval
 Age of First Use
 Availability
 Where
 When

When Do You Use Any Alcohol



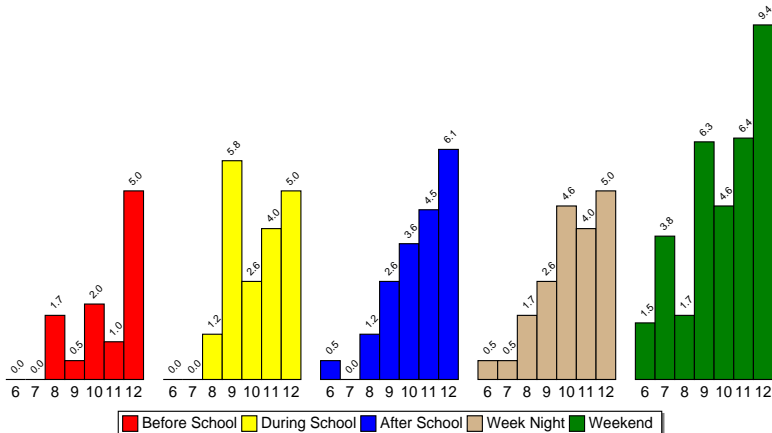
Frequency of Use
 Perception of Risk
 Parent Disapproval
 Friends Disapproval
 Age of First Use
 Availability
 Where
 When

When Do You Use Cigarettes



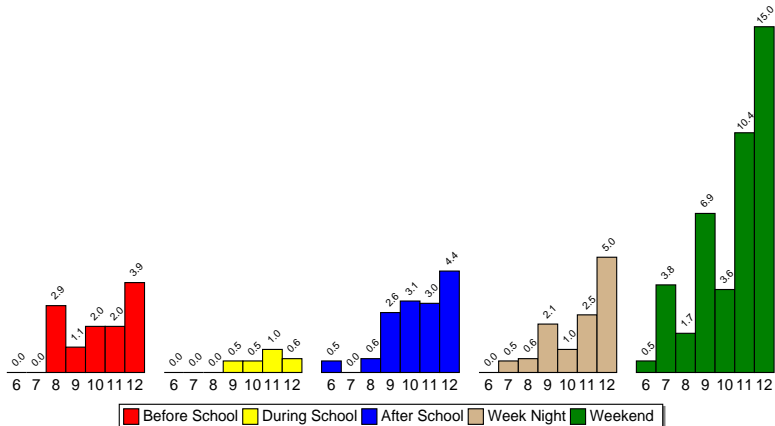
Frequency of Use
 Perception of Risk
 Parent Disapproval
 Friends Disapproval
 Age of First Use
 Availability
 Where
 When

When Do You Use Smokeless Tobacco



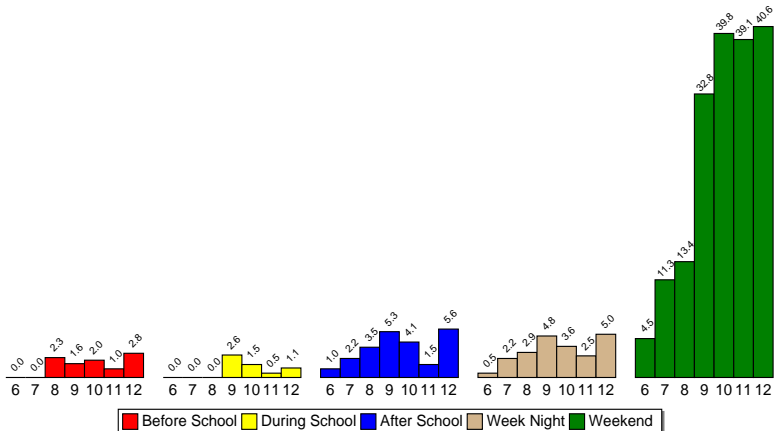
Frequency of Use
 Perception of Risk
 Parent Disapproval
 Friends Disapproval
 Age of First Use
 Availability
 Where
 When

When Do You Use Cigars



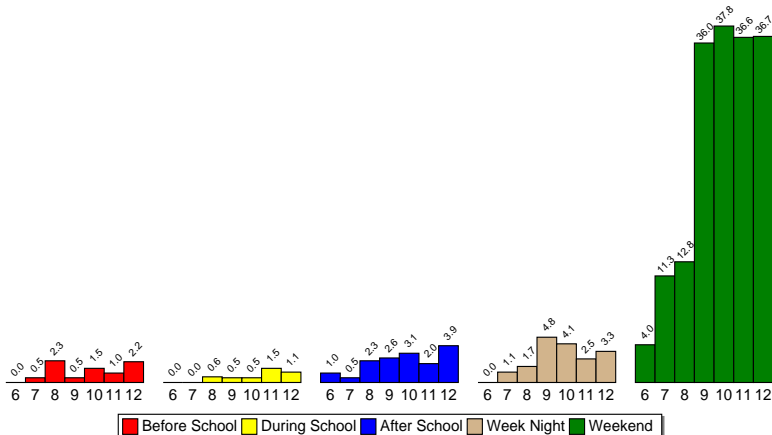
Frequency of Use
 Perception of Risk
 Parent Disapproval
 Friends Disapproval
 Age of First Use
 Availability
 Where
 When

When Do You Use Beer



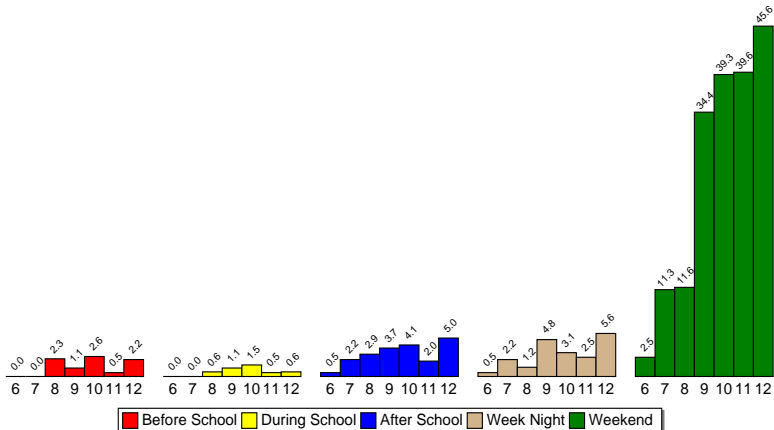
Frequency of Use
 Perception of Risk
 Parent Disapproval
 Friends Disapproval
 Age of First Use
 Availability
 Where
 When

When Do You Use Coolers, Breezers, etc.



Frequency of Use
 Perception of Risk
 Parent Disapproval
 Friends Disapproval
 Age of First Use
 Availability
 Where
 When

When Do You Use Liquor



Frequency of Use
 Perception of Risk
 Parent Disapproval
 Friends Disapproval
 Age of First Use
 Availability
 Where
 When

When Do You Use Marijuana

